



PTC India Financial Services Limited

May 2012

Our Vision and Mission

Vision

Be the most preferred financial services partner in the entire energy value chain.

Mission

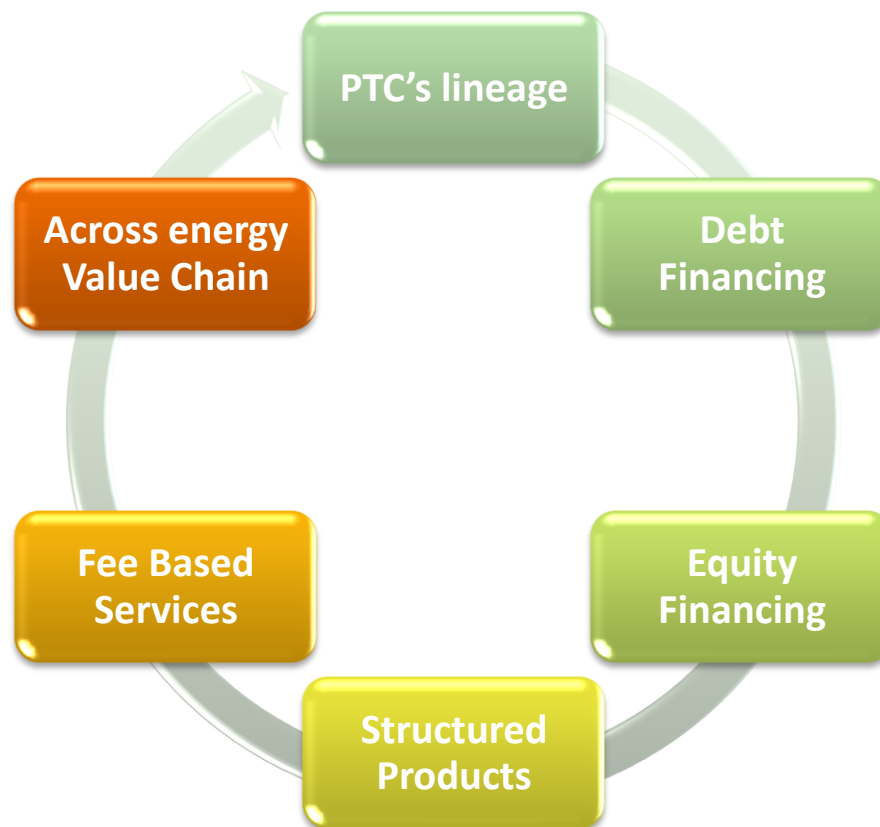
To partner and forge strong relationships with credible stakeholders to provide complete financial services for all links in the energy value chain.

Business Activities of PFS

To provide Investment and Financing solutions for the broader Energy Value Chain

Scope of business activities

- ◆ Invest in Greenfield projects, Brownfield projects and provide expansion capital on an ongoing basis
 - To the companies engaged in identified target sectors
- ◆ Invest in identified projects
 - Power Exchange
 - Tolling projects
 - Biomass projects
 - Wind projects
 - Coal projects
 - Investment in cross border transmission link
- ◆ Term Financing
- ◆ Financial solutions and advisory



Strategic financial partnership to bring in :

- ◆ Fund management best practices
- ◆ Strong relationship with global investors

Highlights of Profit and Loss Statement

₹ in crores

	Q4 FY12	Q3 FY12	Q4 FY11	FY 12	FY 11
Interest Income	41.86	37.00	19.56	132.95	74.26
Other Operating Income	74.15	57.01	6.79	173.69	34.57
Total Income from operations	116.01	94.01	26.35	306.64	108.83
Interest and financial charges	19.70	16.67	14.49	68.61	44.38
Other operating expenses	13.51	4.07	4.72	36.95	13.04
Total expenses	33.21	20.74	19.21	105.56	57.42
Profit from operations	82.80	73.27	7.14	201.08	51.41
Other income	0.05	0.06	-	0.56	0.02
Profit before tax	82.85	73.33	7.14	201.64	51.43
Tax expense	19.58	15.43	1.33	47.60	14.40
Net Profit for the period	63.27	57.90	5.81	154.04	37.03

Highlights

₹ in crores

	Q4 FY12	Q4 FY11	% Growth	FY 12	FY 11	% Growth
Total Revenue	116.06	26.35	340	307.20	108.85	182
Profit on sale of non-current trade investments	66.51	-	100	127.24	12.37	929
Net Interest Income	25.11	5.49	357	68.67	31.60	117
Profit after tax	63.27	5.81	989	154.04	37.03	316
Return on assets (%)	3.22	0.34		7.84	2.18	
Earnings per share (₹)	1.13	0.13		2.74	0.85	

₹ in crores

	FY12	FY11	% Growth
Balance Sheet size	1,964	1,699	16
Outstanding loan book	1,266	680	86
Cumulative debt sanctioned	6,335	3,095	105

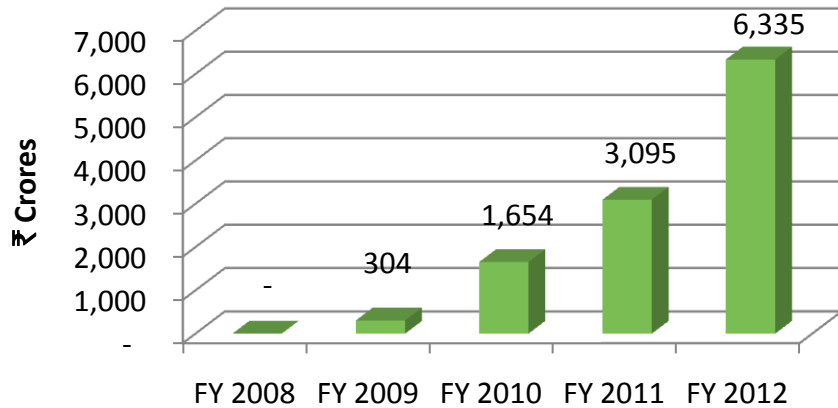
Resource Mix

₹ in crores

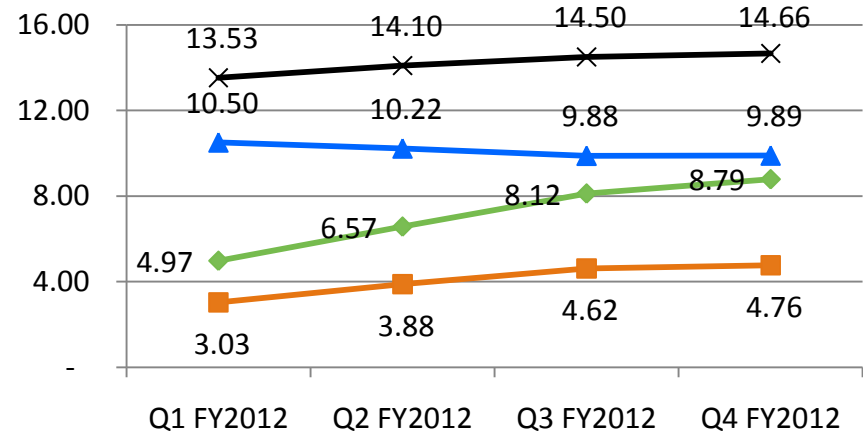
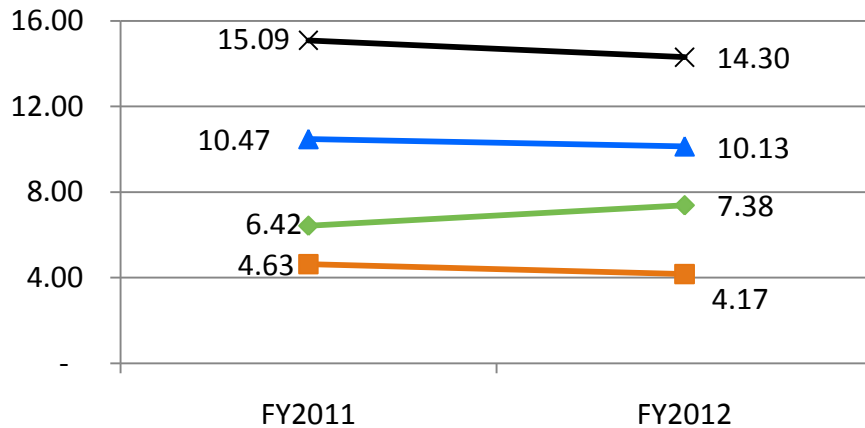
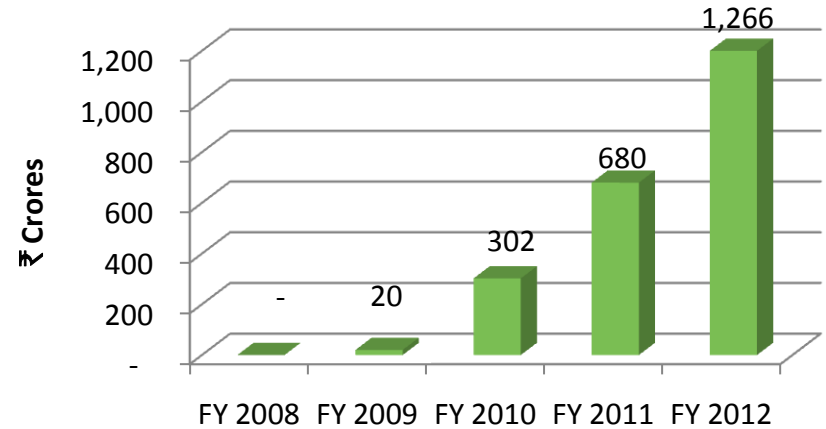
	As at March 31, 2012	As at March 31, 2011
Shareholders' Funds		
Share Capital	562.08	562.08
Reserves and Surplus	609.88	455.61
Loan Funds		
Long term loans	206.88	237.79
Long term bonds / debentures	391.69	332.09
External commercial borrowings	133.59	-
Short term loans	28.10	-
Total	1,932.22	1,587.57

Operational Highlights

Cumulative Debt Sanctioned



Outstanding loan book

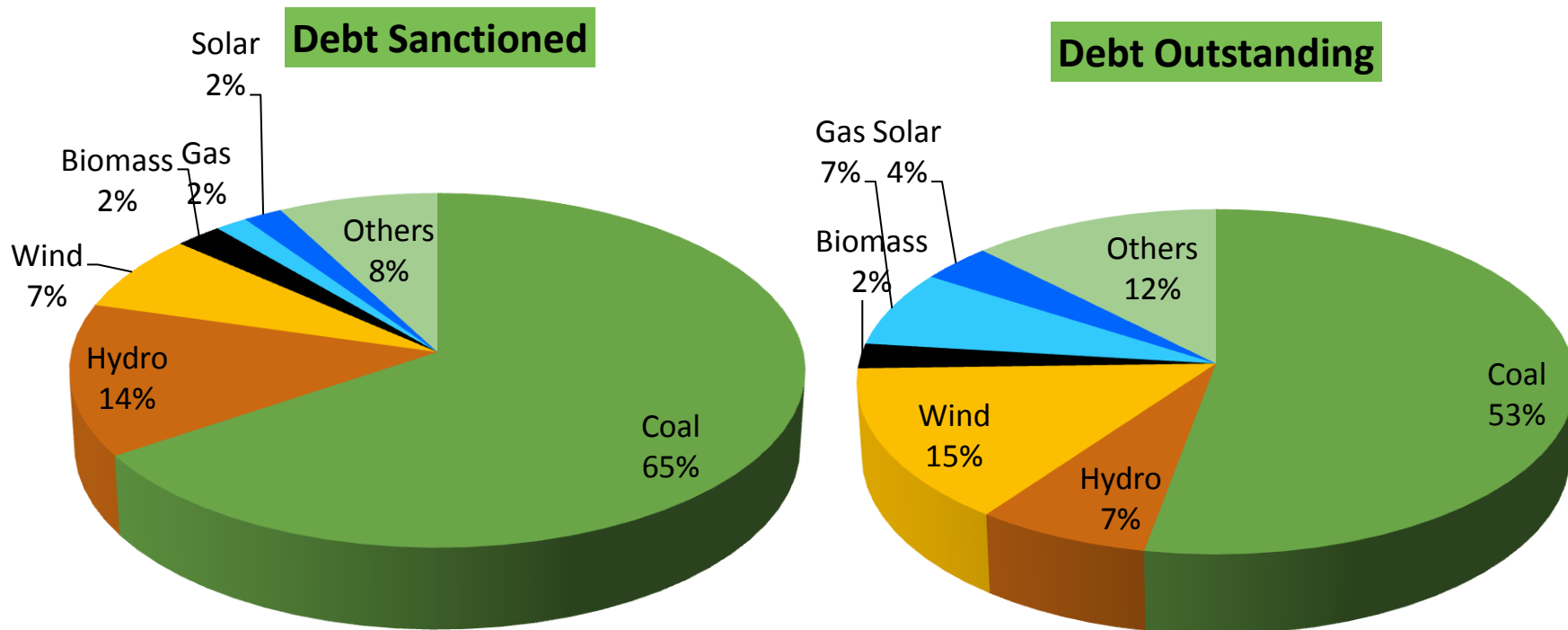


◆ NIM ■ Spread ▲ Cost of funds ✕ Yield

◆ NIM ■ Spread ▲ Cost of funds ✕ Yield

Portfolio Mix – Debt Assisted Projects

As at March 31, 2012



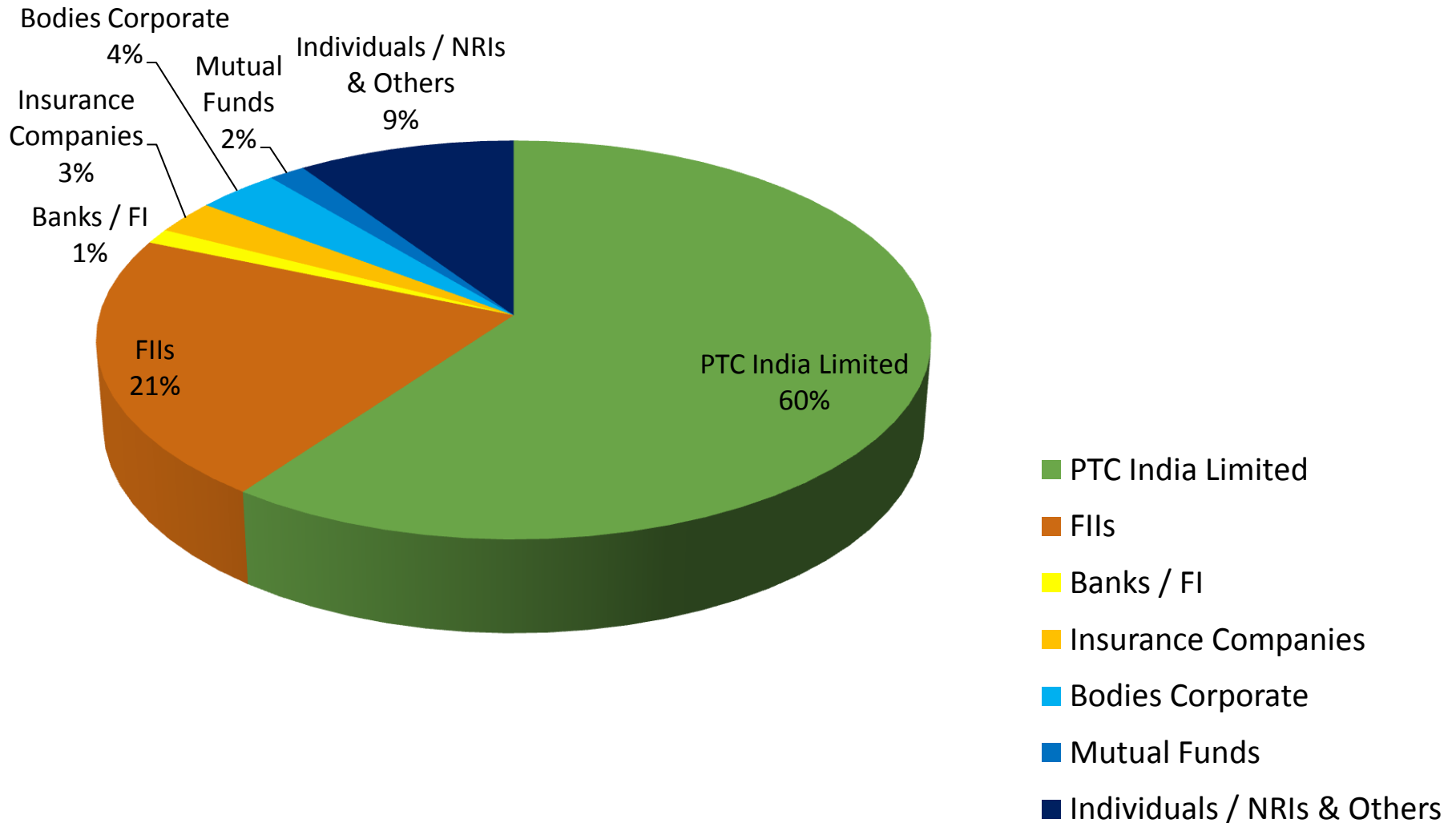
Debt sanctioned : ₹6,335 crores

Debt outstanding : ₹1,266 crores

Overview of Major Equity Investments

Equity Investments	Capacity (MW)	Outstanding as at 31.03.12 (₹ Crores)	Investment Status
Indian Energy Exchange Limited	N.A.	1.52	<ul style="list-style-type: none"> Operational since June 2008. PFS now holds 5% in the Company.
Ind- Barath Energy (Utkal) Limited	700	105.00	<ul style="list-style-type: none"> Financial closure has been achieved. All clearances received and project is expected to be commissioned by July 2013.
Meenakshi Energy Private Limited	900	114.42	<ul style="list-style-type: none"> Phase I (300MW) project is expected to be commissioned in July 2012 Phase II (700 MW) project is on track after financial closure and expected to be commissioned in December 2013.
East Coast Energy Private Limited	1,320	133.39	<ul style="list-style-type: none"> Project on track after financial closure. Clearance from Expert Appraisal Committee , MoEF received on recent environment issues. Received FIPB approval for swap of shares to the holding company.
R S India Wind Energy Private Limited	99	61.12	<ul style="list-style-type: none"> Rs 53.94 crores invested in 99.45 MW wind power project. Phase I (41.25 MW) of the project fully commissioned and phase II is under implementation Rs 71.77 million invested in WTG manufacturing facility housed in a subsidiary company
Total		415.45	

Shareholding Pattern as at March 31, 2012



Our Shareholders

Top 10 shareholders as at March 31, 2012

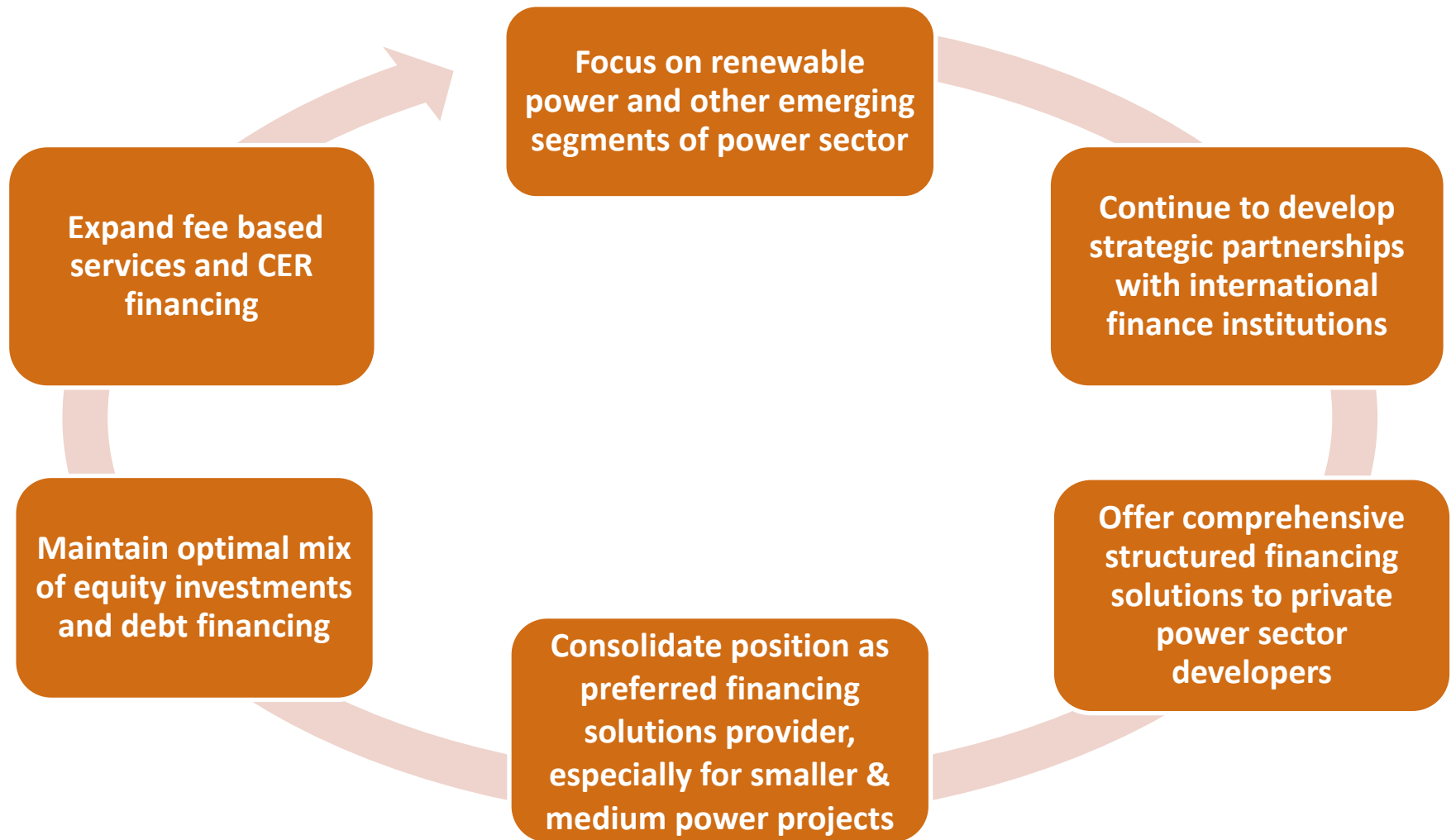
Name	% Equity	Name	% Equity
PTC India Limited	60.00	Life Insurance Corporation Of India	2.47
GS Strategic Investments Limited	8.66	Bajaj Allianz Life Insurance Company Limited	2.16
HSBC Bank (Mauritius) Limited A/C GMFA Asia Venture Limited	3.68	Capital International Emerging Markets Fund	1.82
Macquarie India Holdings Limited	3.46	HDFC Trustee Company Limited	0.97
Emerging Markets Growth Fund, Inc.	2.83	Corporation Bank	0.91

Other Institutional Shareholders

DSP Blackrock Micro Cap Fund
 General Insurance Corporation Of India
 BNY Mellon Vietnam India & China VC Fund
 Indian Overseas Bank
 Capital Guardian Emerging Markets Equity DC
 Master Fund

Aviva Life Insurance Company India Limited
 Union Bank Of India
 IBM Diversified Global Equity Fund
 Government Of Singapore Investment Corporation
 Elara India Opportunities Fund Limited

Way Forward



Thank You